

# Partner Newsletter

## Fall / Winter 2015



# WATERSHED WORKS



### *In this issue:*

Clackamas River Basin Council  
Clackamas Soil & Water Conservation District  
Columbia Slough Watershed Council  
Greater Oregon City Watershed Council  
Molalla River Watch  
North Clackamas Urban Watersheds Council  
Oswego Lake Watershed Council  
Pudding River Watershed Council  
Sandy River Basin Watershed Council  
Tryon Creek Watershed Council  
Tualatin River Watershed Council

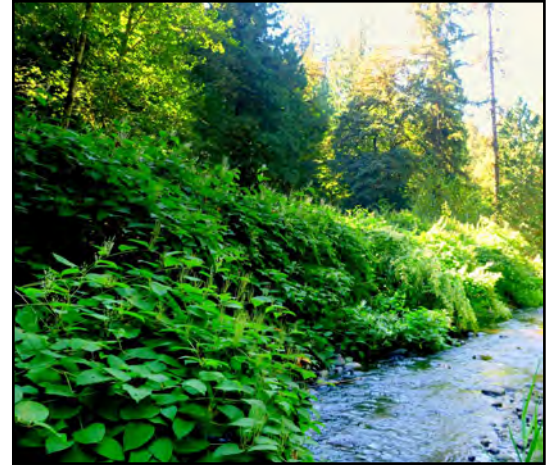
Fall/Winter Events Calendar

## CLACKAMAS RIVER BASIN COUNCIL

### CRISP Plans the Demise of Invasive Weeds in the Clackamas Watershed

Hot off the press, the *Clackamas River Invasive Species Partnership* (CRISP) just released a comprehensive weed management plan for the Clackamas watershed, describing priorities and strategies to control and prevent the spread of invasive weeds across the basin's varied habitats. It will assist in identifying high priority threats and coordinating the implementation of weed treatments across property boundaries.

The Clackamas River Invasive Species Management Plan considered a number of factors to identify weed population and geographic priorities. These include a prioritization model known as Weed Heuristics: Invasive Population Prioritization for Eradication Tool (WHIPPET), data from the Intertwine Alliance's Regional Conservation Strategy, existing partner project areas, and the rare, threatened and endangered species dataset.



Japanese knotweed dominates portions of Deep Creek

The partnership is led by the Clackamas River Basin Council (CRBC) and the Clackamas Soil and Water Conservation District (CSWCD), with additional funding and support from Metro regional government. CRISP also represents input and support from 13 public and nonprofit land management organizations. Planning of cooperative implementation activities is currently underway for the 2016 field season.

For more info or for a copy of the CRISP Plan, contact either the CSWCD at 503-210-6000 or CRBC at 503-303-4372 or visit: <http://weedwise.conservationdistrict.org/CRISP>.



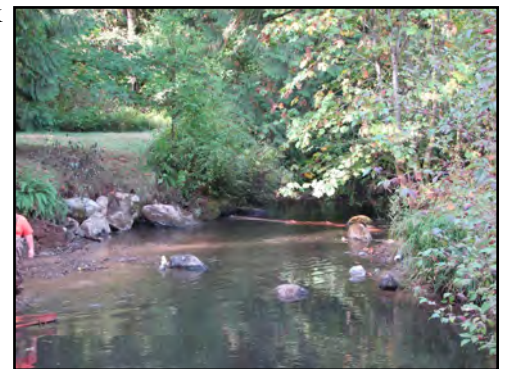
## CLACKAMAS SOIL & WATER CONSERVATION DISTRICT

### Removing Old Weirs...a dam good idea!

Weirs are barriers built in a stream to pool water for irrigation, recreation, and sometimes to generate power. They are found in many of our local streams, even though most are no longer in use, and often cause problems for juvenile fish. During times of low streamflow, these structures tend to be too tall for young fish to jump, and during high streamflow, the narrow opening in the weir causes the water to flow too quickly for young fish to navigate.

Many years ago, crews at Camp Adams installed a weir on Nate Creek in the Milk Creek Watershed, to create a swimming hole for the retreat. Within a year, the sediment buildup caused the swimming hole to become useless. Feeling it was time to return the stream to its original state; the current owners of Camp Adams contacted the Clackamas Soil and Water Conservation District for assistance.

Following months of planning and permitting, Oregon Department of Fish and Wildlife removed the concrete and wood structure, making Nate Creek a free-flowing stream. The project included log jams and boulder clusters in the stream and native trees and shrubs on the streamside area to provide habitat, bank protection, and shade for insects, fish, and wildlife.



Free flowing Nate Creek!

For more information on weir removal on your property, contact Clackamas Soil and Water Conservation District at [info@conservationdistrict.org](mailto:info@conservationdistrict.org), 503-210-6000, or visit [www.conservationdistrict.org](http://www.conservationdistrict.org).

## COLUMBIA SLOUGH WATERSHED COUNCIL

### Stewardship Saturdays with the Columbia Slough Watershed Council

This fall, our Stewardship Program is gearing up for an eventful winter season. This coming year, Stewardship Saturdays, our restoration volunteer workday events, will begin in January and continue throughout the season through mid-March.

**Activities will include planting native plants, removing invasive species, picking up litter, protecting trees from beavers by installing cages, and other restoration activities.**

We will be kicking off our stewardship season at Kelley Point Park. The watershed council has participated in restoration efforts at Kelly Point Park in partnership with Portland Parks and Recreation over several years. This year, we will move to a new section of the park and extend an existing native planting area. All of our sites have a unique history and community surrounding it.

Come out, help us plant, and learn about the work that's happening in your watershed!

Adele Rife, Stewardship Director [adele.rife@columbiaslough.org](mailto:adele.rife@columbiaslough.org) Phone: (503) 281-1132



## GREATER OREGON CITY WATERSHED COUNCIL

The North Clackamas Urban and Greater Oregon City Watershed Councils are teaming up to sell live and cut Christmas trees on December 5<sup>th</sup> between 10 AM and 3 PM. Pick out your special tree in the rear parking lot of the Portland Aquarium located at 16323 SE McLouglin Blvd., Milwaukie. The cut trees will be in the six foot range, and the live trees will be in a two or three-gallon nursery container, suitable for smaller homes or table tops.

“The sale gives the two Councils the chance to work together in the community on watershed health messaging,” said Terry Gibson, Interim Executive Director of the NCUWC.

Sarah Miller, Secretary to the GOCWC and whose family is donating the unshorn Noble Fir trees said, “The opportunity to combine holiday spirit and support watershed health through this fund raiser was very rewarding last year. We hope to reach even more people this year through this combined council partnership.”



Cut trees will sell for \$20 and everyone is encouraged to contact the watershed councils to reserve their tree: [coordinator@ncuwc.org](mailto:coordinator@ncuwc.org) . Live trees in containers will be priced downward from \$20 according to size. Final selection of each tree will occur at the point of sale.

If you would like to donate a tree to a family in need please contact Sarah at [nwsam1915@gmail.com](mailto:nwsam1915@gmail.com) . For additional information contact Terry Gibson at 503-545-1419 [www.ncurbanwatershed.wordpress.com](http://www.ncurbanwatershed.wordpress.com)

### Meeting People and Exploring Ponds

Natural and manmade ponds are integral to watershed diversity and support wildlife like frogs, salamanders, and turtles. This past spring and summer, Molalla River Watch (MRW) collaborated with Oregon Department of Fish and Wildlife (ODFW), volunteers, and landowners to survey ponds for amphibian egg masses and turtles.

Jim Holley, an ODFW volunteer coordinator and wildlife surveyor, asked us for recommendations on ponds to survey within the Molalla River Watershed. In February, MRW posted an article in the Molalla Pioneer and Canby Herald, urging locals to contact us about ponds in their backyards. We had a great response. All of the landowners were happy to learn which amphibian and turtle species Jim and his dedicated volunteers found in their ponds.



Young western pond turtle shown to volunteers

Amphibian egg masses found included northern red-legged frogs, chorus frogs, northwestern salamanders, and long-toed salamanders. We also saw rough-skinned newts and non-native bull frogs. Turtles observed were native western painted and western pond turtles, in addition to non-native red-eared sliders. It was especially noteworthy to see northern red-legged frog egg masses, and western painted and western pond turtles since they are State Sensitive Species. Sensitive Species have threats causing declining populations and/or degraded habitats.

Contact Asako Yamamuro, [MRW@molalla.net](mailto:MRW@molalla.net), 503-559-0885, [www.molallariverwatch.org](http://www.molallariverwatch.org)

## NORTH CLACKAMAS URBAN WATERSHEDS COUNCIL

### NCUWC and Partners are Active in our Community

The canoes were full for the July 25<sup>th</sup> Summer Paddle. The journey from Gladstone's Meldrum Bar Park to Milwaukie's refurbished Riverfront Park along the Willamette River was made possible by support of the Lower Columbia Estuary Partnership (LCEP), which mobilized two new canoes for the event this year. The citizen science expedition took water temperature samples at tributary confluences, illustrating the importance of the restoration work that we do with our private partners.

On September 16<sup>th</sup> and 19<sup>th</sup>, NCUWC partnered with the Johnson Creek Watershed Council (JCWC) in hosting a citizen science event on dragonflies that took place on a Wednesday evening at the Clackamas Gustav's, followed by a field trip at Happy Valley Park the next Saturday. The Xerces Society partnered by supplying a dynamic speaker that enthralled the dinner guests and inspired the field trip attendees, Celeste Mazzacano.



The 3<sup>rd</sup> annual Fall Hull Ave. wetland clean-up was rescheduled for October 10 through the on-going partnership with the North Clackamas Parks & Recreation District (NCPRD). Ten volunteers showed up to remove debris from this heavily used natural area.

Contact Terry Gibson, Interim Executive Director, [coordinator@ncuwc.org](mailto:coordinator@ncuwc.org), 503-550-9282, [www.ncurbanwatershed.wordpress.com](http://www.ncurbanwatershed.wordpress.com) .

## OSWEGO LAKE WATERSHED COUNCIL and TRYON CREEK WATERSHED COUNCIL

In August 2015, Oswego Lake Watershed Council (OLWC) and Tryon Creek Watershed Council (TCWC) strengthened their partnership by hiring a joint staff position. OLWC was looking for a part-time coordinator to manage its restoration sites while TCWC needed a part-time volunteer coordinator to oversee its volunteer program. Rather than hiring two part-time employees, the two watershed councils asked: why not combine to make one full-time position?

Although unconventional, creating the position was logical as both watersheds overlap in the City of Lake Oswego. Rather than working in silos side by side, a shared staff position would strengthen their partnership, promote collaboration, and help extend financial resources. Combining also made the position more appealing as it offered full-time employment and a unique professional development opportunity.

Adra Lobdell, who served as an AmeriCorps member at TCWC the previous year, stepped into the position and so far has enjoyed the challenge of balancing her role at the two councils.

Adra Lobdell, Oswego Lake Watershed Council Volunteer Coordinator  
[adra@oswegowatershed.org](mailto:adra@oswegowatershed.org) (904) 476-5592



Adra leading a group of volunteers

## PUDDING RIVER WATERSHED COUNCIL

### Pudding River Partnerships

The Pudding River Watershed Council is holding its general annual meeting on Wednesday, March 9<sup>th</sup>, 2016. The meeting will be held at 6:00 at the Seven Brides Brewery located at 990 N 1st St, Silverton, OR 97381. PRWC has been engaging volunteers throughout the watershed to make observations of the waterways in their community. We are working hard to strengthen partnerships within the watershed. With the help of citizens within the community, PRWC is assessing how to better communicate the value of soil and water conservation practices to a multi-cultural, trilingual society.

**For more information,** please contact Anna Rankin, Council Coordinator, at [cleanpuddingriver@gmail.com](mailto:cleanpuddingriver@gmail.com) or via the website at <http://puddingriverwatershed.org/>



Grace Chen is the secretary of the PRWC, she holds a BS in natural resource management. The photo of Grace was taken at Wilhoit County Park in the Rock Creek watershed.

## SANDY RIVER BASIN WATERSHED COUNCIL

### Providing Flood Risk Resources to Local Residents

The Sandy River Basin Watershed Council (SRBWC) joins Clackamas County Emergency Management, the Villages of Mt. Hood, Hoodland Fire District, and local river geomorphology experts to provide resources to upper watershed residents regarding flood risks on the Sandy River. SRBWC will be leading a floodplain restoration project to occur next summer to demonstrate the benefit of habitat-positive restorative flood response.

Through the Flood of Information event on October 24th, residents were able to obtain information on localized projects that serve their communities, including the Lolo Pass Road Alternatives Study and the Sandy River Erosion Study. SRBWC will soon be releasing our Restorative Flood Response Handbook, which will act as a guide to local communities to understand the history of river formation, risks associated with living on the river, and how residents can work together to create habitat-friendly flood risk management plans. The Watershed Council will have this information [online](#) to outline the full spectrum of resources available to landowners once the Handbook is released. For information about flood resources, see the [Clackamas County Emergency Management website](#).

Learn more about SRBWC contact Corinne Handelman at [corinne@sandyriver.org](mailto:corinne@sandyriver.org) or go to our website at [www.sandyriver.org](http://www.sandyriver.org)



Discussing restorative flood response plans

## TUALATIN RIVER WATERSHED COUNCIL

### Tualatin River Watershed Fall Spawning Survey Training

This fall, trained Tualatin Basin community volunteers and landowners will survey rural streams to identify and count Coho redds (redds are a nest of salmon eggs). Through a partnership between the Oregon Department of Fish and Wildlife and Tualatin River Watershed Council, interested volunteers participate in a classroom session and learn about the life history of salmon and trout, the habitat needs of these species, and where these species are found within the Tualatin Basin. A field session follows at Oregon Department of Forestry Gales Creek campground where volunteers learn about and observe survey protocols.

The information collected from the surveys improves our understanding of which areas are used for spawning, rearing and summer refuge. This information adds to past rapid bio-assessment surveys and is used by Tualatin River Watershed Council and its partners prepare restoration plans and target restoration dollars to areas used by Coho salmon, steelhead and cutthroat trout in the Tualatin basin.

More information about volunteering for TRWC spawning surveys and surveying protocols can be found at <http://trwc.org/get-involved/spawning-survey/> or contact April Olbrich, [trwc@trwc.org](mailto:trwc@trwc.org), 503-846-4810.



ODFW District Biologist Tom Murtagh explains to volunteers where in the stream to look for spawning Coho and redds. (Photo credit: David Leahy)

## About this Publication

Watershed Works is a collaboration of Portland-Metro regional Watershed Councils and Soil and Water Conservation Districts. This publication is a platform for sharing our regional efforts in improving water quality and overall watershed health. Many thanks to our partner contributors:

CLACKAMAS RIVER BASIN COUNCIL  
CLACKAMAS SOIL & WATER CONSERVATION DISTRICT  
COLUMBIA SLOUGH WATERSHED COUNCIL  
EAST MULTNOMAH SOIL AND WATER CONSERVATION DISTRICT  
GREATER OREGON CITY WATERSHED COUNCIL  
JOHNSON CREEK WATERSHED COUNCIL  
MOLALLA RIVER WATCH  
NORTH CLACKAMAS URBAN WATERSHEDS COUNCIL  
OSWEGO LAKE WATERSHED COUNCIL  
PUDDING RIVER WATERSHED COUNCIL  
SANDY RIVER BASIN WATERSHED COUNCIL  
TRYON CREEK WATERSHED COUNCIL  
TUALATIN RIVER WATERSHED COUNCIL  
WEST MULTNOMAH SOIL AND WATER CONSERVATION DISTRICT



Red-legged frog egg mass in a landowner's private pond in the Molalla River Watershed.



Cutthroat trout captured during weir removal project on Nate Creek.

# Fall & Winter Events Calendar

We have so many events upcoming that we need two pages to share everything with you! Click on the event heading to be directed to the link for more information.

## December

[Ebay Auction](#), Nov. 21-Dec. 2

Bid on items such as outdoor gear, clothing, and vacation rentals! All proceeds benefit Tryon Creek Watershed Council.

[Johnson Creek Watershed Council Volunteer Appreciation Dinner](#) Dec. 3, 6 pm to 8 pm *Cedarville Lodge, Gresham*

A potluck celebration for everyone who volunteered your time with JCWC during 2015.

[Pfeifer Ridge Tree Planting](#), December 5, 9 am to 12 pm, *Happy Valley*

Join CRBC and the Pfeifer Ridge Homeowner's Association for a community planting party along Sieben Creek.

[Tideman Johnson Work Party](#), December 5, 9 am to 1 pm, *Tideman Johnson Natural Area, Portland*

Join JCWC, Friends of Tideman Johnson, Portland Parks, and an Impact NW crew to prep a site for a future planting.

[Watershed Councils Holiday Tree Benefit](#) December 5, 10 am to 3 pm, *Milvaukie*

North Clackamas Urban and Greater Oregon City Watershed Councils -teaming up to sell live /cut Christmas trees.

[OLWC Invasive Removal Work Party](#), December 6, 1 pm to 4 pm, *Hope Community Church, Lake Oswego*

Wear sturdy shoes, long pants, and rain gear. Tools, gloves, hot cocoa, and cookies provided.

[Holiday Party](#), Dec. 7, 6 pm to 8 pm, *Tryon Creek Nature Center*

Come celebrate with us with a silent auction, door prizes, food, and beverage!

[Planting at Kelly Butte Nature Park](#), December 12, 9 am to 12 pm, *Kelly Butte Nature Park, Portland*

Help JCWC, Friends of Trees, and Portland Parks volunteers to plant native trees and shrubs in this natural area.

## January

[Soil School Registration](#), Register with West Multnomah Soil and Water Conservation District in January 2016

A full day of information sessions on how to improve the health of your soil! April 16, 2016, *PCC Rock Creek Event Center*

[MLK Day of Service Saturday Work Party](#), January 16, 9am to 12pm, *Errol Heights Natural Area, Portland*

Come show your love of our public natural areas at this work party honoring MLK Jr and the spirit of service.

[Currin Creek Tree Planting](#), January 23, 9am to 12pm, *Eagle Creek/Estacada*

Help CRBC improve watershed health by gifting this Shade Our Streams project with native plants.

[Planting at Veteran's Creek](#), January 23, 9am to 12pm, *SE 98th Ave & Mt Scott Blvd, Portland*

Join JCWC, Friends of Trees, and Portland Parks to plant native trees and shrubs in this Mt. Scott neighborhood.

[Stewardship Saturday](#), January 23, 9am to 12pm, *Kelley Point Park, Portland* The event runs rain or shine.

Volunteer to continue restoring Kelley Point Park with native species that provide habitat and improve water quality!

[Fish & Culvert Survey Talk](#), January 26, 7pm to 9pm, *Molalla Public Library, Molalla*

Talk by Ted Labbe on fish and road crossing surveys of small streams in the Molalla River Watershed.



## January continued

**Planting at Powell Butte**, January 30, 9 am to 12 pm, *5465 SE Circle Ave, Portland*

Join JCWC, Friends of Trees, and Portland Parks to plant native trees and shrubs in this valuable wetland.

**Stewardship Saturday**, January 30, 9 am to 1 pm, *Columbia Children's Arboretum, Portland*

Join the council for a morning of weed removal and native species planting. The event runs rain or shine.

## February

**Slough Celebration Gala**, February 5, 6 pm to 9 pm, *Melody Ballroom, Portland*

Recognition of Leadership and Achievement Award winners and fund raising for education, recreation, and restoration.

**Sandy River Delta Planting**, February 6, 9 am to noon, *Sandy River Delta, Troutdale*

Join SRBWC and Friends of Trees to plant oak woodland species at the Sandy River Delta!

**\$2 Native Plant Sale**, Feb. 13-16, *Tryon Creek Nature Center*

Order native plants for only \$2! All proceeds benefit restoration in Tryon Creek. Place your order today!

**Native Plant Sale**, online sales open on January 20. *East Multnomah Soil and Water Conservation District office, Portland*

This year we are excited to focus exclusively on bare-root trees and shrubs. Pick up date is February 20.

**Watershed Wide Event**, Feb. 22, 11:30 am to 3:30 pm, *Location TBD*

Join our largest volunteer event and help restore Tryon Creek. Light lunch and refreshments provided.

**Rock Creek Work Party**, February 27, 9 am to 12 pm, *Damascus*

Give native trees and shrubs a little TLC this winter by helping spread a blanket of mulch.

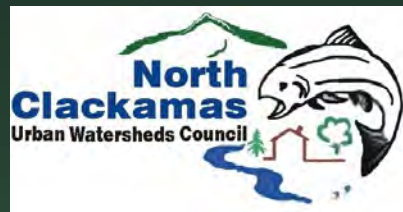
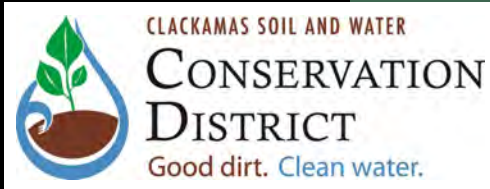
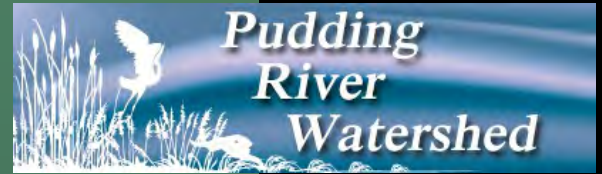
## March

**Rock Creek Watershed Wide Event**, March 12, 9 am to 12 pm, *Happy Valley*

Join CRBC, SOLVE, and Friends of Trees for a community-wide planting party at Pendarvis Farm.

**Amphibian Egg Mass & Turtle Talk**, March 22, 7 pm to 9 pm, *Molalla Public Library, Molalla*

Talk by Jim Holley on amphibian egg mass and turtle surveys of ponds in the Molalla River Watershed.



Great Things Happen When We Work Together!